



RECON5™ 5G

Up to 5-in-1 High Performance IP67/IP69K Antenna

A rugged outdoor antenna, RECON5 is designed to provide high performance LTE and 5G connectivity for wireless machine-to-machine applications. The extremely low profile makes it practically undetectable and the small footprint allows it to mount to virtually any M2M or IoT enabled asset.

FEATURES

- Powerful MIMO technology
- Up to 2 x LTE/5G (600 MHz - 6 GHz) elements
- Up to 2 x Wi-Fi 6/6E/7 (2.4 & 5-7.1 GHz) elements
- Optional GNSS element
- Ultra-low 1.8" height
- IP67 and IP69K ingress protection
- Available in black

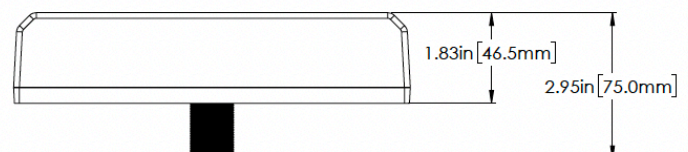
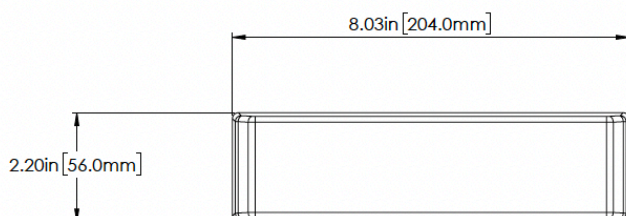
ADVANTAGES

- High efficiency provides better performance
- Omni-directional radiation pattern provides uniform coverage
- Optional EZConnect™ cable harness allows for quick and easy customizations
- 5 year limited warranty included¹
- Covered by one or more patents and pending applications²

¹See terms and conditions at <https://airgain.com/antenna-plus-support/>

²For a list of the patents covering this product please visit <https://airgain.com/patents/>

DIMENSIONS



COMMON PART NUMBERS (inquire to Airgain for other configurations)

CONFIGURATION	CELLULAR ELEMENTS	WI-FI ELEMENTS	GNSS	PART NUMBER <small>*Requires EZConnect Cable Harness</small>	DESCRIPTION
5-in-1	2	2	Yes	AP-RF5G-C2W2G-[x]-121-B10	MIMO LTE/5G x 2, Wi-Fi x 2 & GNSS, SMA on LTE/5G & GNSS, RP-SMA on Wi-Fi, Black, 10 feet coax
				AP-RF5G-C2W2G-[x]-121-B3	MIMO LTE/5G x 2, Wi-Fi x 2 & GNSS, SMA on LTE/5G & GNSS, RP-SMA on Wi-Fi, Black, 3 feet coax
				*AP-RF5G-C2W2G-[x]-B1	EZConnect Antenna with MIMO LTE/5G x 2, Wi-Fi x 2 & GNSS, Black, 1 foot coax
				[z]-C2W2G-1-2-1-14	EZConnect Cable Harness with Cell x 2, Wi-Fi x 2, GNSS, SMA on Cell & GNSS, RP-SMA on Wi-Fi, 14 feet length
4-in-1	2	1	Yes	AP-RF5G-C2WG-[x]-121-B10	MIMO LTE/5G x 2, Wi-Fi x 1 & GNSS, SMA on LTE/5G & GNSS, RP-SMA on Wi-Fi, Black, 10 feet coax
				AP-RF5G-C2WG-[x]-121-B3	MIMO LTE/5G x 2, Wi-Fi x 1 & GNSS, SMA on LTE/5G & GNSS, RP-SMA on Wi-Fi, Black, 3 feet coax
				*AP-RF5G-C2WG-[x]-B1	EZConnect Antenna with MIMO LTE/5G x 2, Wi-Fi x 1 & GNSS, Black, 1 foot coax
				[z]-C2WG-1-2-1-14	EZConnect Cable Harness with Cell x 2, Wi-Fi x 1, GNSS, SMA on Cell & GNSS, RP-SMA on Wi-Fi, 14 feet length
3-in-1	2	0	Yes	AP-RF5G-C2G-[x]-11-B10	MIMO LTE/5G x 2 & GNSS, SMA on LTE/5G & GNSS, Black, 10 feet coax
				AP-RF5G-C2G-[x]-11-B3	MIMO LTE/5G x 2 & GNSS, SMA on LTE/5G & GNSS, Black, 3 feet coax
				*AP-RF5G-C2G-[x]-B1	EZConnect Antenna with MIMO LTE/5G x 2 & GNSS, Black, 1 foot coax
				[z]-C2G-1-1-14	EZConnect Cable Harness with MIMO/Cell x 2 & GNSS, SMA on Cell & GNSS, 14 feet length
2-in-1	2	0	No	AP-RF5G-C2-[x]-1-B10	MIMO LTE/5G x 2, SMA on LTE/5G, Black, 10 feet coax
				AP-RF5G-C2-[x]-1-B3	MIMO LTE/5G x 2, SMA on LTE/5G, Black, 3 feet coax
				*AP-RF5G-C2-[x]-B1	EZConnect Antenna with MIMO LTE/5G x 2, Black, 1 foot coax
				[z]-C2-1-14	EZConnect Cable Harness with Cell x 2, SMA on Cell, 14 feet length

MOUNTING OPTIONS [x]	DESCRIPTION
Q	Threaded Bolt Mount (must purchase AP-MAG for magnetic mount or AP-SCM for suction mount)
EZConnect CABLE HARNESS [z]	DESCRIPTION
CH	Inquire to distributor for select SKUs
CCH	Custom Cable Harness with cable lengths up to 34 feet, and other variations

For mounting instructions please visit <https://www.airgain.com/installation-and-removal-guides/>.

TECHNICAL SPECIFICATIONS

Performance results are measured in a test chamber with 1' LMR-195 cables and over a 2'x2' ground plane, results are more reliable than data from software simulations

ELECTRICAL

Frequency Range	Elements 1 up to 2	617-960/1700-2700/3300-4200/5150-5850 MHz
	Elements 3 up to 4	2.4/5.15-7.125 GHz
	Element 5 (optional)	1550~1610 MHz
Operational Bands	Elements 1 up to 2	5G (Band 71, LTE, CBRS, LAA)
	Elements 3 up to 4	Wi-Fi 6E
	Element 5 (optional)	GPS L1/GALILEO E1/GLONASS G1/BeiDou B1/QZSS L1
Peak Gain: Isotropic	Elements 1 up to 2	617-960 MHz, 6.8 dBi
		1700-2700 MHz, 6.3 dBi
		3300-4200 MHz, 8.0 dBi
		5150-5850 MHz, 6.5 dBi
	Elements 3 up to 4	2.4 GHz, 6.2 dBi
		5-7 GHz, 8.0 dBi
Element 5 (optional)	33.2 dBi	
Isolation	Elements 1 up to 2	>9 dB
	Elements 3 up to 4	>12 dB
Average Efficiency	Elements 1 up to 2	617-960 MHz, >59%
		1700-2700 MHz, >53%
		3300-4200 MHz, >52%
		5150-5850 MHz, >44%
	Elements 3 up to 4	2.4 GHz, >66%
		5-7 GHz, >49%
Correlation Co-efficient	Elements 1 up to 2	617-960 MHz, <0.2
		1700-5850 MHz, <0.1

ENVIRONMENTAL

Hazardous Substances	RoHS Compliant
Temperature	-40°C to 85°C (-40°F to + 185°F) Operating and Storage
Humidity (Non-Condensing)	60°C and 95% RH Operating and Storage
Water Ingress	IP67 and IP69K
Shock & Vibration	Conformance to MIL-STD 810G

MECHANICAL

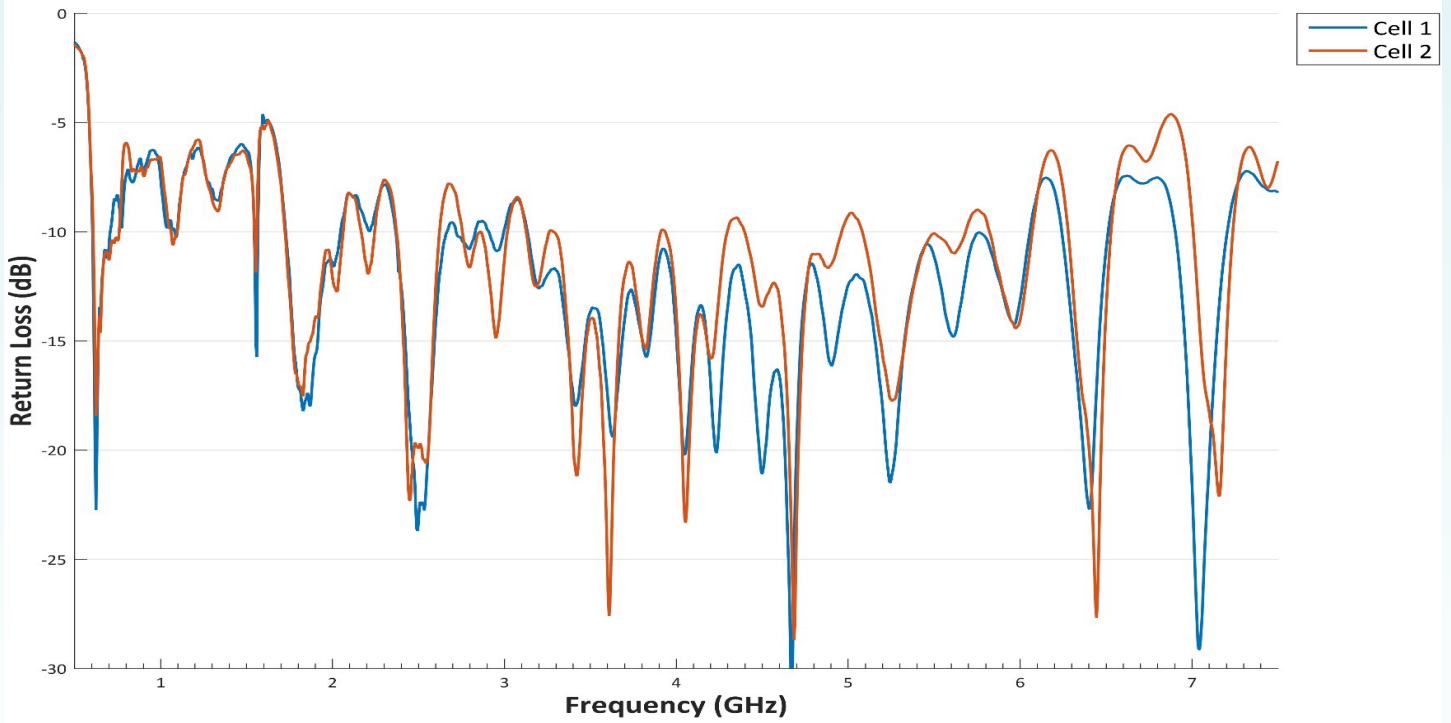
Dimensions	Height	1.83" (46.5mm)
	Width	2.20" (56.0mm)
	Length	8.03" (204.0mm)
Color	Black (B)	

GNSS

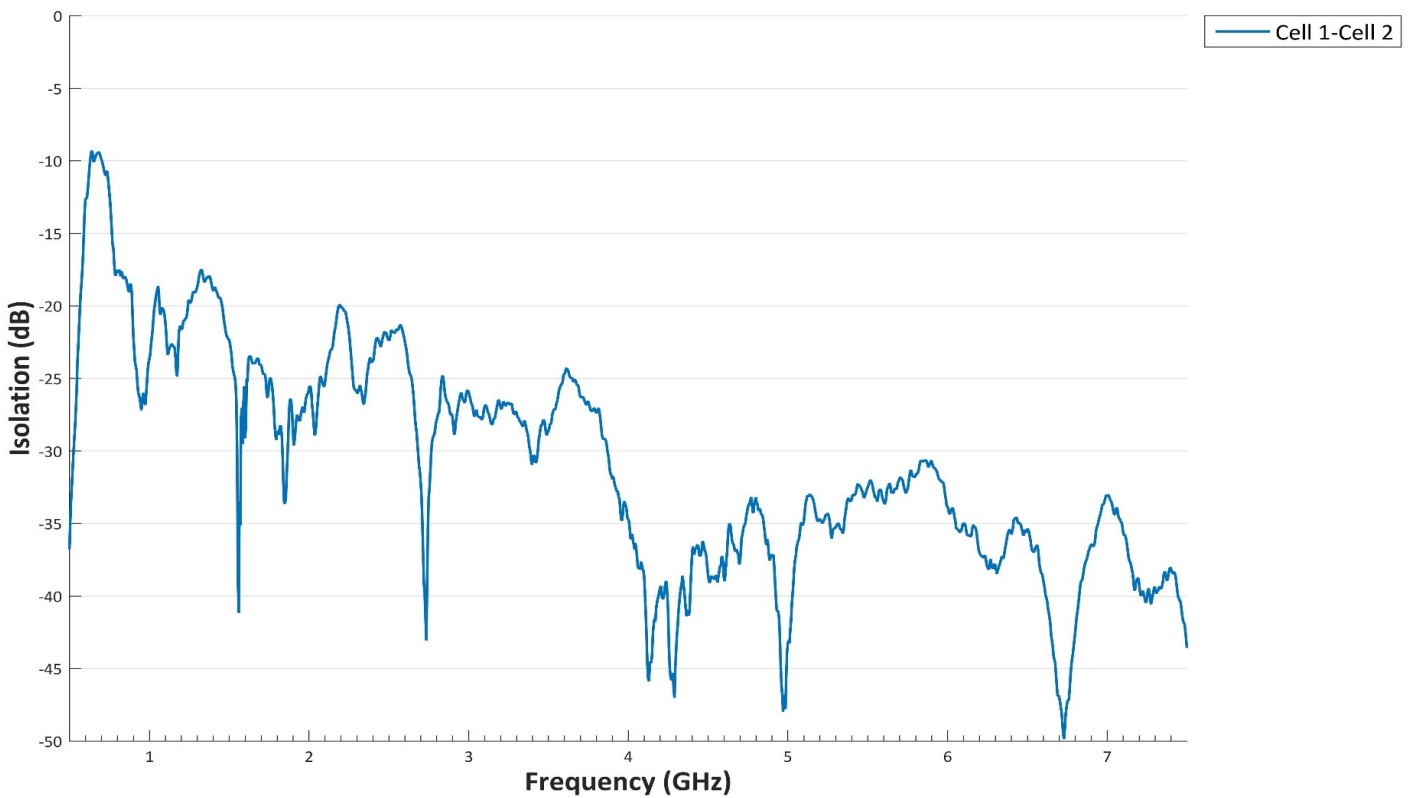
Ceramic Patch Antenna Specification	Bandwidth	1558-1610 MHz
	Gain@Zenith	0 dBi
	Polarization	R.H.C.P.
	Axial Ratio	3.0 dB Typ.
LNA Specification	Noise Figure	1.2 dB
	Gain	35 dBi
	VSWR	<2:1
	Voltage	1.6V~10V
	Current	9+/-2mA@3.3V

Guidance for interpreting the data sheet is available on our website: <https://www.airgain.com/resources/datasheet-term-guide/>

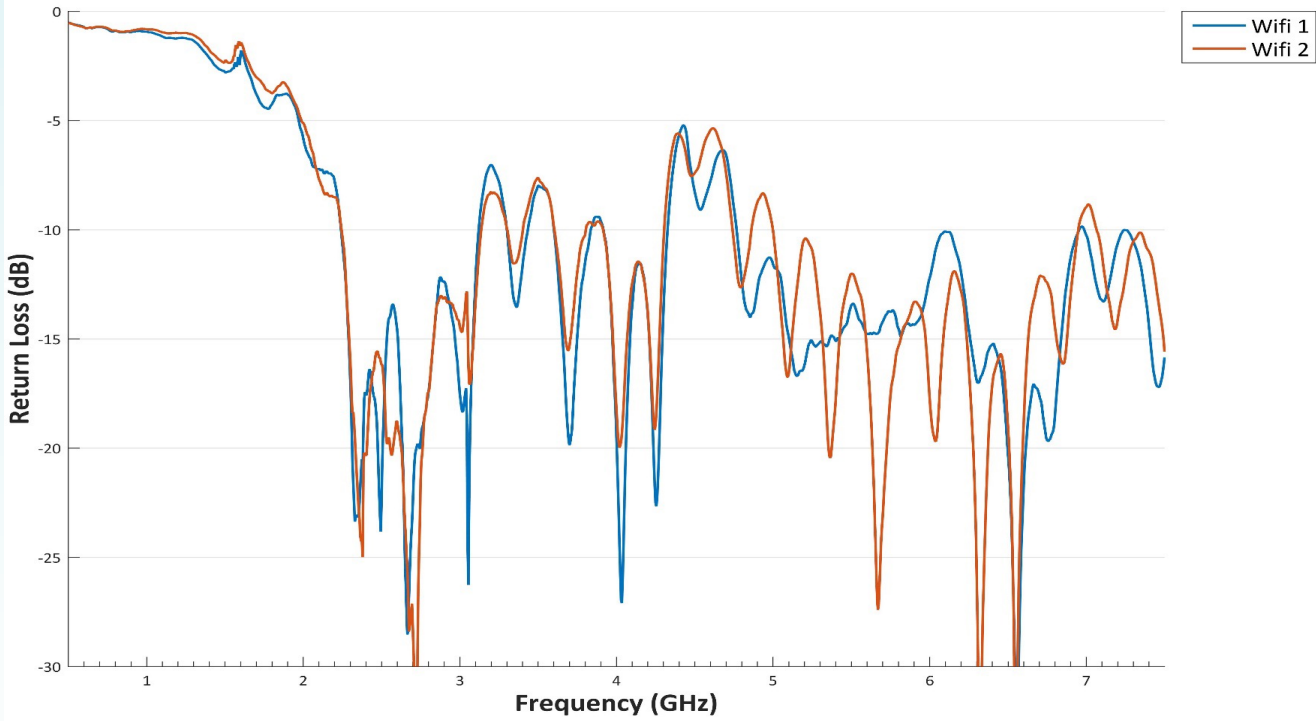
Return Loss of Cell Antennas



Isolation of Cell Antennas



Return Loss of Wi-Fi Antennas



Isolation of Wi-Fi Antennas

