



AirLink® Premium with Device Management and Robust Mobility Reporting



AIRLINK® PREMIUM



What is AirLink Premium?

AirLink Premium is a subscription service that combines Semtech's best-in-class AirLink Management Service (ALMS) network management software with, advanced mobility reporting, 24/7 technical support, hardware warranty and advance replacement. One year of AirLink Premium comes standard with the AirLink XR90 router. AirLink Premium is also available as an option with other AirLink routers.

AirLink Premium enables you to efficiently manage multiple routers, monitor your network and vehicles, reduce downtime and lower your cost of ownership with:



AirLink Management Service (ALMS) with Tracker Widget

Easily manage multiple routers, identify problems, reduce downtime and lower your cost of ownership. [ALMS](#) also streamlines router fleet administration, serving as the system of record for support, warranty, and service subscriptions.

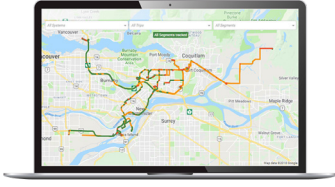
ALMS Tracker Widget provides a near real-time map view of your routers for live system tracking.



Technical Support

Get direct access to Technical Support provided by Semtech.

- 24/7/365 technical support from wireless experts via phone or online access
- Free access to [The Source](#) for all technical documentation and software downloads



Advanced Mobility Reporting

[Advanced Mobility Reporting](#) provides historical reporting capabilities as well as comprehensive monitoring of your network and vehicles through out-of-the-box reports including coverage maps, coverage trails, driver behavior, engine fault summary, and more.



Out-of-band Management to ALMS

AirLink XR90 and XR80 routers include a dedicated cellular radio built into the chassis of the device. This capability provides resilient access to AirLink Management Service (ALMS), allowing out-of-band management access at no additional cost, with your on-going AirLink Premium subscription.



Extended Hardware Warranty and Advance Replacement

Extend your hardware warranty up to 5 years with an active AirLink Premium subscription. In the event of a device malfunction, Advance Replacement Program provides same-day shipping for in-warranty router replacements, minimizing downtime, spare inventory and keeping your operations running smoothly.

Full warranty terms available at: www.sierrawireless.com/end-user-warranty



ACCELERATED AND SECURE DEPLOYMENTS

- No more heavily manual, device-by-device configuration and deployment
- Our device management software enables you to get multiple routers quickly working in the field.
- Easy-to-use configuration templates ensure each router is set-up consistently, to your requirements, and new devices can be simply added.
- Keep your solutions current and secure with real-time monitoring, automatic alerts, and easy access to the latest security patches.



SIMPLIFY OPERATIONS

- Remotely monitor, manage, and upgrade your routers over-the-air, anytime, anywhere.
- Advanced Mobility Reporting pre-defined reports provides lightweight AVL and fleet management capabilities.
- Get access to the latest software updates that can be deployed to all your routers with a few clicks.



REDUCE DOWNTIME

- Keep your devices operating at peak efficiency
- Access to knowledgeable technical support 24/7/365 means faster troubleshooting and problem-solving.
- Access to the Advance Replacement Program for a malfunctioning router means the in-warranty can be issued and shipped on the same day its reported to get you back on-line faster.

Semtech - Supporting Your Success

Semtech is committed to your success with these additional value added options:

- **Hybrid Cloud** – This optional security feature merges the benefits of cloud technology with on-premise security controls for the management of your AirLink® XR and RX routers offering ultimate security and efficiency.
- **Smart Connectivity** – Adding our connectivity to your routers can further simplify your deployments.
- **ALMS VPN** – Establishes a VPN connection between ALMS and the infrastructure where your devices are located.
- **Single Sign-On** – Enables users to log in to ALMS using the enterprise credentials they use every day.



Contact us to Learn More

Visit the **AirLink Services Portfolio** page www.sierrawireless.com/airlink-services or email sales@semtech.com for more information.

About Semtech

Semtech Corporation (Nasdaq: SMTC) is a high-performance semiconductor, IoT systems and cloud connectivity service provider dedicated to delivering high-quality technology solutions that enable a smarter, more connected and sustainable planet. Our global teams are committed to empowering solution architects and application developers to develop breakthrough products for the infrastructure, industrial and consumer markets.

To learn more about Semtech technology, visit us at Semtech.com or follow us on [LinkedIn](#) or [X](#).